

BIANCA LEE VASQUEZ
Portfolio

Bianca Lee Vasquez, of cuban-ecuadorian origin.
Born 1983, Miami, USA, lives and works in Paris

Bianca Lee Vasquez's practice consists of ephemeral interventions in nature, actions of indefinite duration, which may last a few minutes or a few hours. Often using a body-oriented conceptual process referred to as earth-body art where she explores the links between man and environment, nature and culture; rarely using the body as a literal representation of itself. These environmental performances go beyond the dimension of performance art, as an experience in life, a acroamatic contact with nature, a profound occasion for concentration in the majestic silence of nature and at times displays the human imprint on earth today.

Statement

Selected Group or Duo Exhibits

Bianca Lee Vasquez
Born in 1983 Miami, United States
Cuban/Ecuadorian Origins
Lives and works in Paris, France

46 rue sainte anne
Paris - 75002
Tel. 06 17 17 90 25
Email. BiancaLeeVasquez@gmail.com
http://biancaleevasquez.com

- 2016 *Soma*
Ofr Galerie
Paris, France
- 2016 *Inner Nature Exhibition*
Espacio Guia
Las Palmas de Gran Canaria
- 2016 Collective Video Art Exhibit; Curator: Jose Albelda
Human and Social Science Department
Teureul, Spain
- 2016 Muestra Internacional de video arte
Espacio Zinc
Salamanca, Spain
- 2015 *Naturaleza y Contemplacion: video art*
Art and Nature Center Can de Farrera
Lleida, Spain
- 2015 *Eco Frames*
Instituto de Valencia de Arte Moderno (IVAM)
Valencia, Spain

Professional Experience

- 2015 Curator of *INFAP 46**
An Innovative Fashion Performance
In collaboration with Anntian
- 2015 Costume Designer
Short-film - *In Our Profession*
Directed by Gai Tordjman
- 2015 Art Director/ Costumiere
Court-metrage - *Naturellement*
Directed by Lucie Clayssen
- 2014 Assistant Costume Designer
Feature Film - *L'échappée Belle*
Directed by Emilie Cherpitel
(starring Clotilde Hesme)
- 2013 Assistant Knitwear Stylist
Chanel Studio, Direction by Karl Lagerfeld
- 2011 Curator of *Rue Sainte Anne House*
Collective: An innovative Fashion Platform
Collaborateurs: Narelle Dore, Anntian, Hui Hui
Pelican Avenue

Performances

- 2016 *Séance Liminoide* by Florencia Rodriguez Giles
Palais Tokyo
Paris, France
- 2016 *Noctario* curated by Florencia Rodriguez Giles and Barbara Hang
Silencio
Paris, France
- 2016 *INFA P 46* Fashion Performance*
Rue Sainte Anne House
Paris, France

Residencies

- 2016 The Rock Slide and the Woods - Performance Workshop by Andreco
Centrale Fies
Trento, Italy

Cursus

- 2014 Studied painting at Ecole Nationale Supérieure des Beaux-Arts
Paris-France
- 2009 Studied textile design at Parsons School of Design
Paris-France
- 2008 Studied Dramatic Arts at the American Academy of Dramatic Arts
New York, New York
- 2007 BA in Dance and Art History from Florida International University
Miami, Florida



Fusion

2014

Performance

video HDV color/sound

music by Ocoeur

2'25"

Performance with cancerous tree. This intervention aims at healing this injured malignant excroissance. The excroissance is a metaphor for the injuries humans make to the earth. I place myself against the tree, standing with my feet deeply anchored in the land and my arms in gracious movement towards the sky. I become a point of fusion where the sky meets the earth and the healing process can occur. My intention is to unite the sky to the tree, tree to man and man to the earth.

Documented in video and photo.

Galluis, France. July 2014.



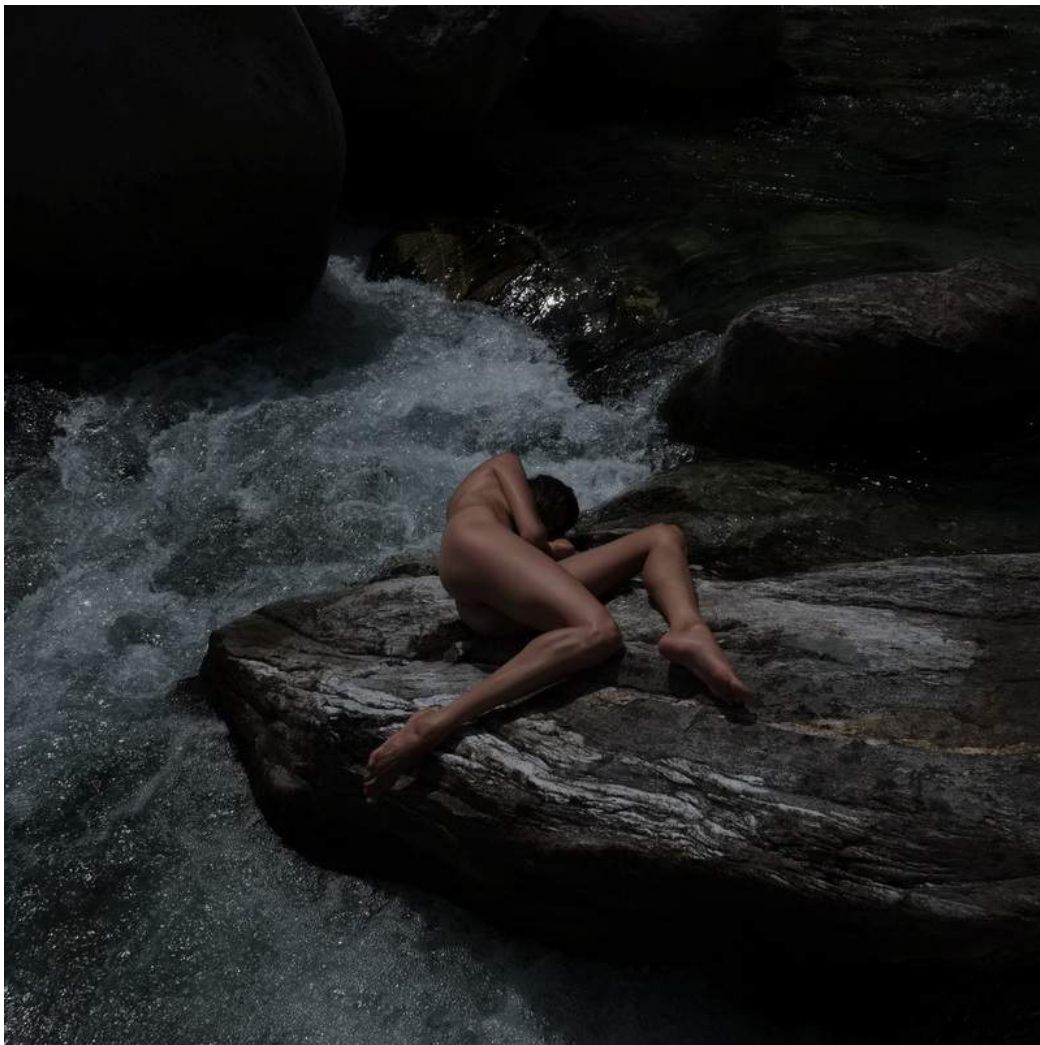
Rock and Reciprocity

2014 (On-going)

Performative Intervention
Val Verzasca, SU

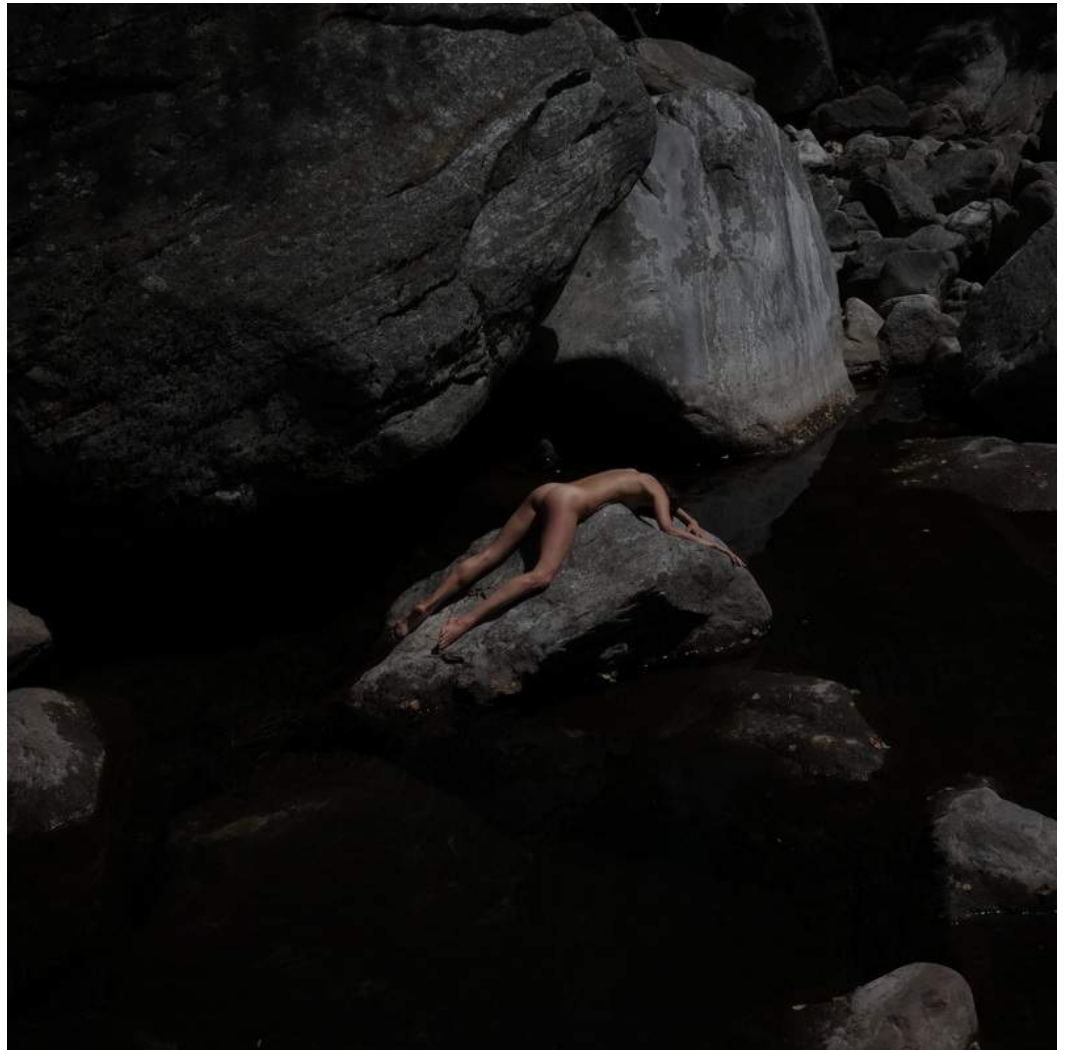
In this ongoing stone animation project I am giving, conversing, courting and interacting with massive numinous stony excursions and asking for things in return.

By performing these rock interventions I am conceiving a sense of connection with the very essence of the land leading to union and eventual procreation. Underscoring the interdependence between human beings and what we might call natural resources. I focus on this reciprocal and complimentary relationship with the natural environment. Rock and Reciprocity focuses on the reciprocal and interdependent relationship with Mother Earth. Interventions self-documented unless otherwise cited.



Rock and Reciprocity 2014 (ongoing)
Val Verzasca
photo Annabelle Bernard and Clement Gloaguen

RIGHT
Rock and Reciprocity 2014 (ongoing)
Tzia Island
photo self-documented





Integration Intervention 2016 (video still)

Integration Intervention 2016

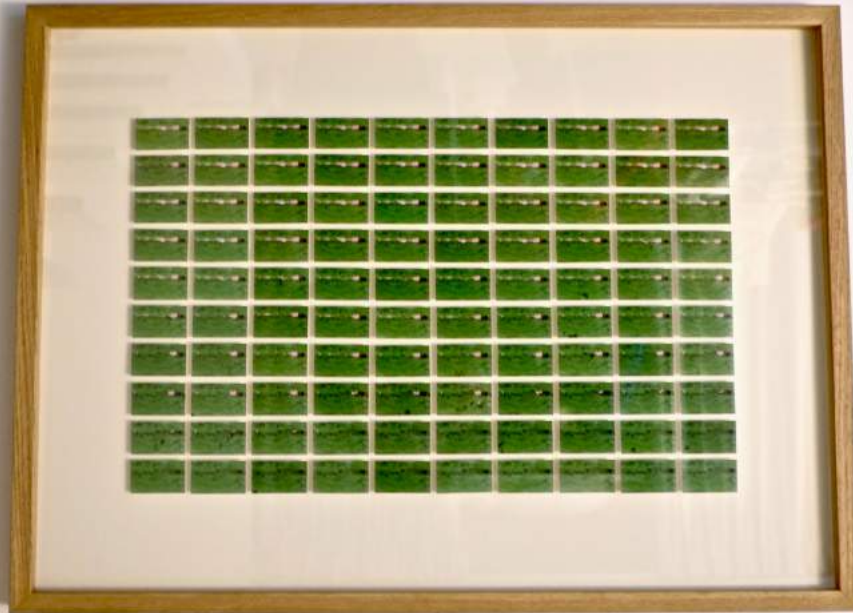
Video and BD assemblage photographique

HDV color/sound

music by Ocoeur

2'09"

I am using the female form as both subject and media to explore issues of origins and ecological consciousness. In this work my body is immersed and shrouded within the landscape. My fully integrated body is slowly being revealed along with my desire to connect with the earth and to explore a new spiritual awakenings.



Multiple-BD assemblage photographiques



View of the performance A Jellyfish Cry on Key Biscayne Island, 2015



A Jellyfish Cry

2015

Performance

Aurelia Jellyfish, Urine

Key Biscayne Island, USA

A performance with the Aurelia (Moon) Jellyfish on Key Biscayne Island. The increasing jellyfish populations near our shorelines should be interpreted as a message the sea is sending us, "Look how badly you are treating me." This performance is an antiphon to the the human-driven benthic jellyfish blooms. The explosion of jellyfish populations on beaches is a profound alarm of the declining health of the world's oceans caused in part by water warming due to climate changes and possibly power-plant thermal effluents. As my body endures the pain of a jellyfish sting it becomes reference of the attributes of pain. Bringing the feeling of pain into the range of the visible.



Rooting Intervention, 2016

Rooting Intervention

2016

Digital Video and C-Print

ivy leaves, gardener's tape

Be a place... find a place... do a place... do an image... plant an image... become an image... oppose an image... burn an image... imagine a dance.

This rooting intervention is about an experience with nature and finding ones place by rooting oneself in earth, place, time and history. By binding my body in ivy roots I am performing a metaphorical grounding action with earth in aim to re-create my roots. I am questioning how does place and time make our identity and inform who we are. Performance documented in photo and video. Galluis, France 2016



Axis Mundi

2015

Photo series

Earthbody Sculptures

In Mesoamerican cultures the central world tree embodies the four cardinal directions, which connects the planes of the underworld and the sky with that of the terrestrial realm. For my personal mourning process of a loved mother figure I went to a symbolic world tree, in this case the sacred banyan trees, as my axis mundi to pursue a connection to the heavens. Earthbody performance with Banyan Trees. Miami, Florida